

## Swenson Arts and Technology High School

2750 Red Lion Road  
Philadelphia, PA 19114

September 3, 2019

Dear Parents , Guardians, and Students,

Welcome back to a new school year. I hope all of you had a safe and healthy summer. I would like to inform you of a few things concerning your child's health. Pennsylvania State law mandates that students entering 11th grade have a physical examination. In order to be in compliance with the law, you are requested to provide a report of this examination upon entrance to school in September.

Also, there are new Immunization requirements . Please refer to the guidelines for the new requirements on the back of this letter. Please provide the school nurse with any updated immunizations your child has received. If you have any questions or concerns, please do not hesitate to contact me at 215-400-3140.

I urge you to contact me if your child has a health condition that may require care at school. It is essential that you communicate with me as soon as possible. Also, as health problems may arise throughout the year, I strongly urge you to contact me, even if these problems are a concern for a short period of time. It is very important to share with the school nurse if your child is hospitalized or unable to attend school for an extended period of time due to illness or injury. In this case, your child may be eligible for Homebound Instruction.

Ideally, the administration of medication or utilization of medical equipment should take place at home. However, pupils with health concerns may require these during school hours. If your child needs medication or utilization of equipment during school hours, please contact me as soon as possible so that you will have the necessary forms needed to be filled out by the doctor. Only medications can be administered in the health room, by the school nurse, per school district policy.

In closing, I believe we can make it possible for your child to be in the very best of health throughout the year. Healthy children and those under the appropriate medical care are in the best position to realize their full potential. I look forward to working with you as a team to assure this potential will be achieved.

Sincerely,



Mrs. K.H. Callaghan RN., MA  
Certified School Nurse

# School Immunization Requirements

## SCHOOL DISTRICT OF PHILADELPHIA

### All Grades (K-12)



*Before attending any Philadelphia schools, students from all grade levels must have received the following vaccines\*...*

**Diphtheria, Tetanus, & Acellular Pertussis (DTap)** 4 doses

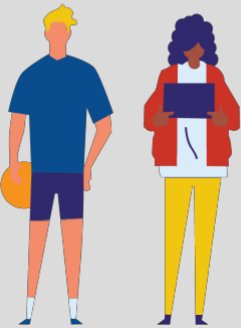
**Polio (IPV)** 4 doses

**Measles, Mumps, and Rubella (MMR)** 2 doses

**Hepatitis B (HepB)** 3 doses

**Chickenpox (Varicella)** 2 doses

### 7th Grade



*In addition to the above vaccines, before entering the 7th grade Philadelphia students must receive these additional vaccines\*...*

**Tetanus, Diphtheria, & Acellular Pertussis (Tdap)** 1 dose

**Meningococcal Conjugate (MCV4)** 1 dose

### 12th Grade



*In addition to the above vaccines, before entering the 12th grade Philadelphia students must receive this additional vaccine\*...*

**Meningococcal Conjugate (MCV4)** 2 doses

\*all doses must be given at the appropriate age & interval, talk to your doctor for more information

*Don't have a doctor?*

# VISIT A CITY HEALTH CENTER

**Need vaccines for your child but you don't have a doctor?** Visit a Philadelphia city health center! City health centers can give your child the vaccines they need to stay healthy and enter school.

Operated by the Department of Public Health, city health centers accept patients with no insurance, Medicaid, HMO plans, and most other insurance options. Walk-in to any of the centers listed below for more information, or call (215) 685-2933 to schedule a vaccine appointment.

Need proof of a vaccine that was already given? Call the Immunization Hotline at (215) 685-6784, 9:00 am to 5:00 pm, Monday through Friday

## Philadelphia City Health Centers

### Health Center 2

1700 S. Broad St., Unit 201, Philadelphia, PA 19145 (215) 685-1803

### Health Center 3

555 S. 43rd St., Philadelphia, PA 19104 (215) 685-7504

### Health Center 4

4400 Haverford Ave., Philadelphia, PA 19104 (215) 685-7601

### Health Center 5

1900 N 20th St., Philadelphia, PA 19121 (215) 685-2933

### Health Center 6

301 W. Girard Ave., Philadelphia, PA 19123 (215) 685-3803

### Health Center 9

131 E. Cheltenham Ave., Philadelphia, PA 19144 (215) 685-5701

### Health Center 10

2230 Cottman Ave., Philadelphia, PA 19149 (215) 685-0639

### Health Center 12 (Strawberry Mansion)

2840 West Dauphin St., Philadelphia, PA 19132 (215) 685-2401

